

WRECKING BALL

JUKIRO-ORCHESTER

Oboe

Musik: MoZella, Stephan Moccio, Sacha Skarbek
mit Lukasz Gottwald, Henry Walter, David Kim
Text: MoZella (2013), Bearbeitung: G. Mautone (2025)

$\text{♩} = 120$

A INTRO

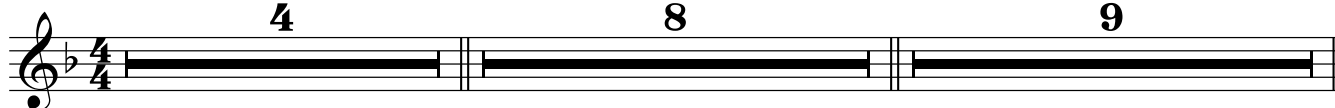
4

B STROPHE 1

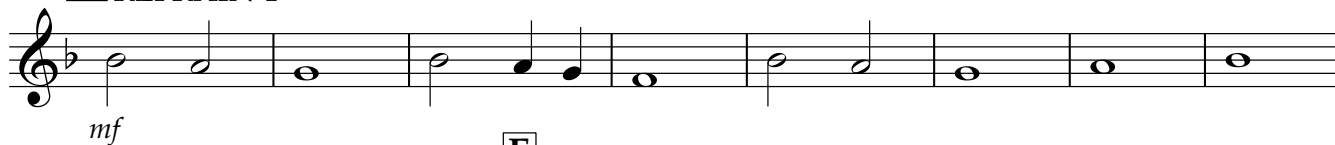
8

C PRECHORUS 1

9

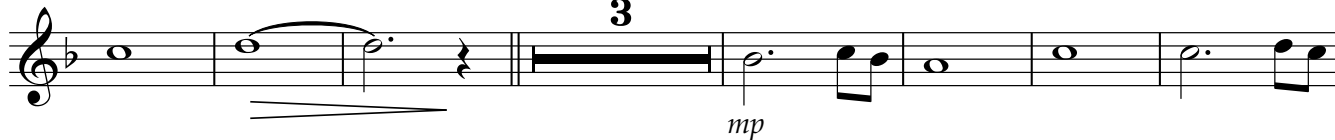


21 **D** REFRAIN 1

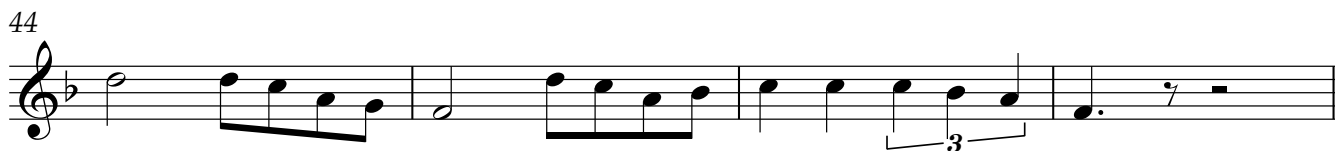


29 **E** STROPHE 2

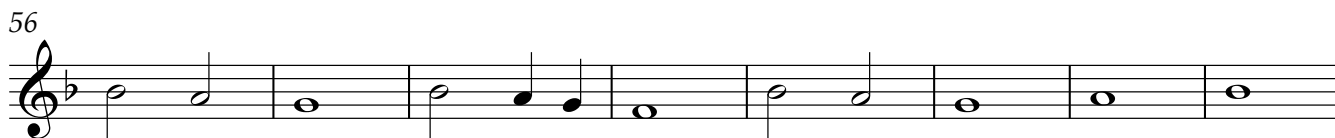
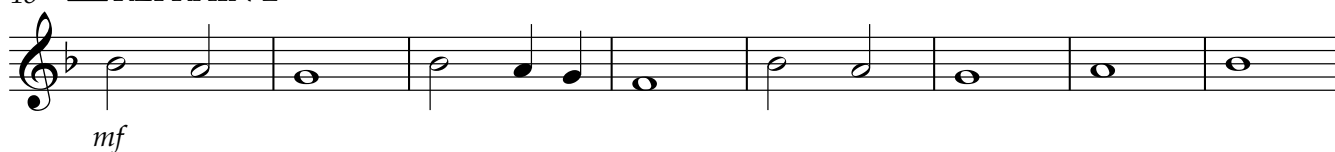
3



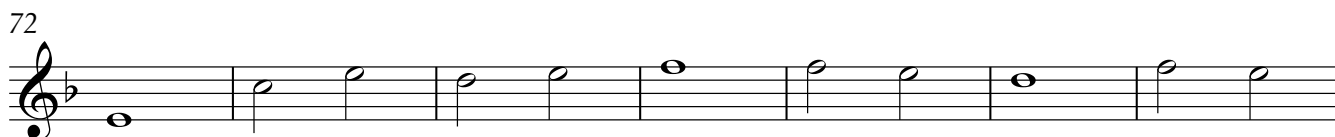
39 **F** PRECHORUS 2



48 **G** REFRAIN 2



64 **H** BRIDGE



Oboe

2

79 **I** PRECHORUS 3
a tempo

85

91 **J** leiser REFRAIN 3 **K** REFRAIN 4
9 Drum Fill

106

113

rit. *mf* *f* *mf*

The musical score for the Oboe part spans measures 79 to 113. It begins at measure 79 with a treble clef, a key signature of one flat (B-flat), and a 3/4 time signature. The first section, labeled 'I PRECHORUS 3', starts at measure 79 with a 'rit.' (ritardando) marking and continues to measure 84 with a 'mf' (mezzo-forte) marking. The tempo is marked 'a tempo'. Measure 85 starts a new phrase. Measure 91 begins 'J leiser REFRAIN 3', which includes a '9 Drum Fill' indicated by a thick black bar. This is followed by 'K REFRAIN 4' starting at measure 92, marked with a 'f' (forte). Measure 106 continues the refrain. Measure 113 ends the piece with a 'mf' (mezzo-forte) marking and a decrescendo hairpin.